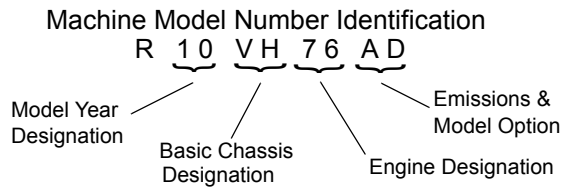


GENERAL INFORMATION

MODEL INFORMATION

Model Identification

The machine model number must be used with any correspondence regarding warranty or service.

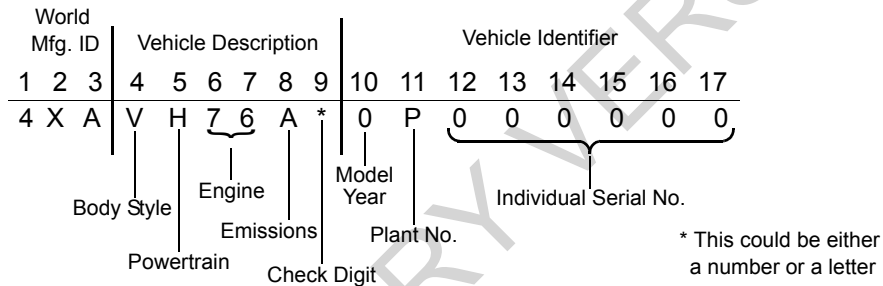


Engine Designation Number

2009: EH076OLE022 / EH076OLE072 Twin Cylinder, Liquid Cooled, OHV 4 Stroke, Electric Start

2010: EH076OLE023 / EH076OLE031 Twin Cylinder, Liquid Cooled, OHV 4 Stroke, Electric Start

VIN Identification



Vehicle and Engine Serial Number Location

Whenever corresponding about a Polaris ORV, refer to the vehicle identification number (VIN) and the engine serial number.

The VIN can be found stamped on a portion of the front left frame rail, close to the left front wheel (see Figure 1-1).

The engine serial number can be found on the sticker applied to the cylinder head on the side of engine (see Figure 1-2).

